

<b>Date:</b> Fecha:	<b>18<sup>th</sup> February 2025</b>	<b>Time:</b> Hora:	<b>9:00</b>
<b>Subject:</b> Asunto:	<b>COC COMMUNICATION No.: 1</b> Comunicado N°1	<b>Document No.:</b> Nº Documento:	<b>3.1</b>
<b>From:</b> De:	<b><i>The Clerk of the Course</i></b> <i>Director de Carrera</i>	<b>Number of pages:</b> Nº de Páginas:	<b>1</b>
<b>To:</b> A:	<b><i>All Competitors / Crew Membres</i></b> <i>Todos los Competidores</i>	<b>Attachments:</b> Adjuntos:	<b>1</b>

## TEST DAY

A test will be organised on Wednesday 2nd April. Information about the test is available in the [www.rallysierramorena.com](http://www.rallysierramorena.com) and Rally Guide that is published on 14.03.2025.

More Info [secretaria@rallysierramorena.com](mailto:secretaria@rallysierramorena.com)

Jordi Barrabes  
Clerk of the Course

# TEST DAY INFORMATION

## 1. GENERAL INFORMATION

The test day of the 42th Rally Sierra Morena “Córdoba Patrimonio de la Humanidad” will take place on Wednesday 2nd April 2025. This test will take place in Villanueva del Rey and Montoro it will have two special stages different:

1. Villanueva del Rey: with a SS distance of 6,40 km and will be held from 09:00 to 17:00 hours.
2. Montoro: with a SS distance of 4,77 km and will be held from 09:00 to 17:00 hours.

Teams may only register for one of the two stages. There will be a maximum of 25 vehicles entered for each test. The timetable for collecting documentation as from 07:30 hours.

**The teams participating in the tests must be in possession of the corresponding licences and all the equipment (overalls, helmet, hans, etc..) required by current regulations, as well as the vehicles must be in perfect condition with regard to the stipulated safety measures (seats, harnesses, extinguishers systems, etc..).**

**Teams that, during the development of the tests, want to put a person other than the registered driver and co-driver on the vehicle must notify the organization at the same time they register for the tests, also providing the data required by the organization. These people must also comply with regulations regarding licenses and safety equipment. The organisation will not be held responsible for any damage suffered by any crew member who does not have the corresponding licence.**

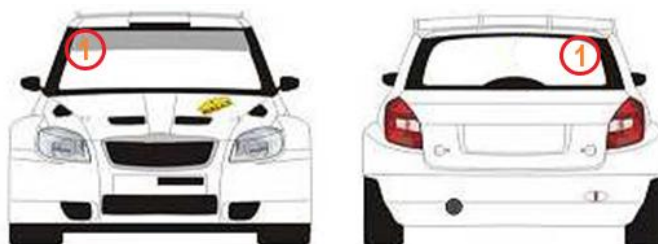
At the start of the special stage there will be a safety team consisting of 1 SVA ambulance, 1 SVB ambulance, 1 fire extinguishing and rescue vehicle and 1 crane. There will also be a special stage chief and his deputy at the finish line, as well as 4 intermediate stations and enough marshals to ensure the smooth and safe running of the day.

Whenever a vehicle suffers a breakdown or an incident on the special stage, the special stage chief will stop the race to remove the vehicle to allow time for repairs.

The test day will follow a similar format to the Shakedown, returning to the start of the rally via a liaison route after the end of the stage. The organisers will provide a road-book with the route of the liaison. The distances of each section are as follows:

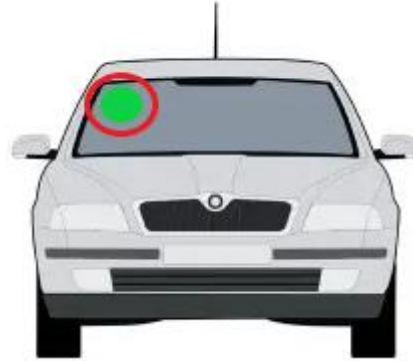
SS name	Km. from Service Park to Start	Km. Special Stage	Km. from Finish to Service Park	Km. from Finish to Start
VILLANUEVA DEL REY	1,30 km	6,30 km	12,10 km	12,70 km
MONTORO	5,80 km	4,77 km	8,10 km	4,0 km

The test day it will be timed and the times will be available on the website [www.fotomotor.es](http://www.fotomotor.es). The organisers will establish an internal list of registered riders in which a number will be assigned to each participating team for subsequent monitoring. At the documentation collection, participants will be given a set of orange numbers to be fixed to the front windscreen and the rear window of the race vehicle.



Procedure for reconnaissance the special stage:

1. This must be done before 08:45 in the morning. The road will be closed to traffic from 08:00 hours. To facilitate access to the special stage, participants will be given a sticker to place on their front windscreen in order to pass the road closure.



2. For safety reasons, it **PROHIBITED** drive against the current during the reconnaissance.
3. Competitors who cannot be reconnaissance before 08:45 hours may take advantage of their first passage through the special stage to do so, advising the special stage chief at the start not to release the next competitor for safety reasons until they have reached the finish line.

## 2. ENTRY PROCEDURE

Teams must complete the Test Day entry form which can be found at the following link:

[https://app-cdn.sportity.com/f72b3818-fc94-4094-b079-1beaded5644e/91368eb5-42fd-4e2f-b2c9-c7c6793be6df\\_FORMULARIO\\_TEST\\_ERC%20V1.pdf](https://app-cdn.sportity.com/f72b3818-fc94-4094-b079-1beaded5644e/91368eb5-42fd-4e2f-b2c9-c7c6793be6df_FORMULARIO_TEST_ERC%20V1.pdf)

To register for the tests, please send the completed form to [secretaria@rallysierramorena.com](mailto:secretaria@rallysierramorena.com). The registration fee payment document must be attached to the same e-mail address and sent to the following bank account:

**Bank: CAJASUR**

**Account name: AUTOMÓVIL CLUB DE CÓRDOBA**

**IBAN CODE: ES46 0237 0185 3091 6776 8341**

**SWIFT CODE (BIC): CSURES2CXXX**

**Reason for payment: TEST ERC RALLY SIERRA MORENA**

Contact telephone numbers:

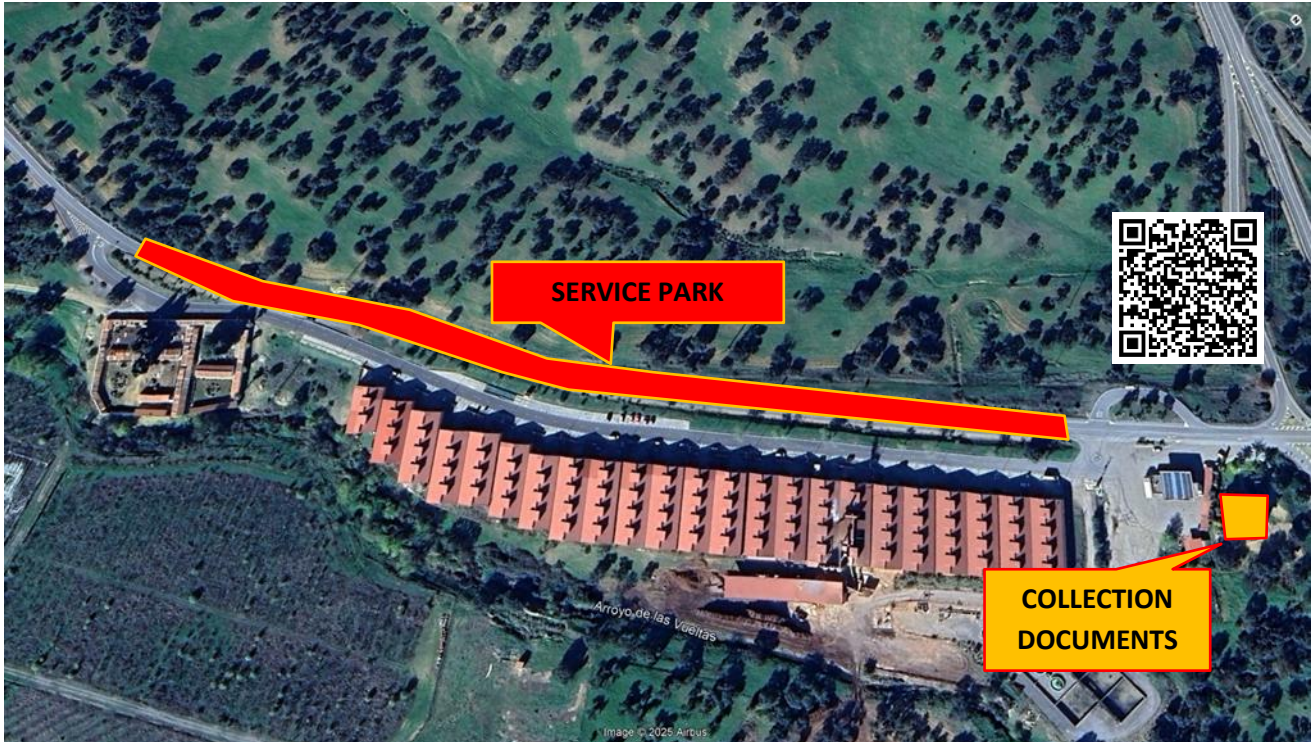
General coordinator before the event: Manuel Muñoz (+34 638 984 610)

General coordinator in Villanueva del Rey: Cristina Viso (+34 657 480 586)

General coordinator in Montoro: Antonio Luna (+34 687 783 057)

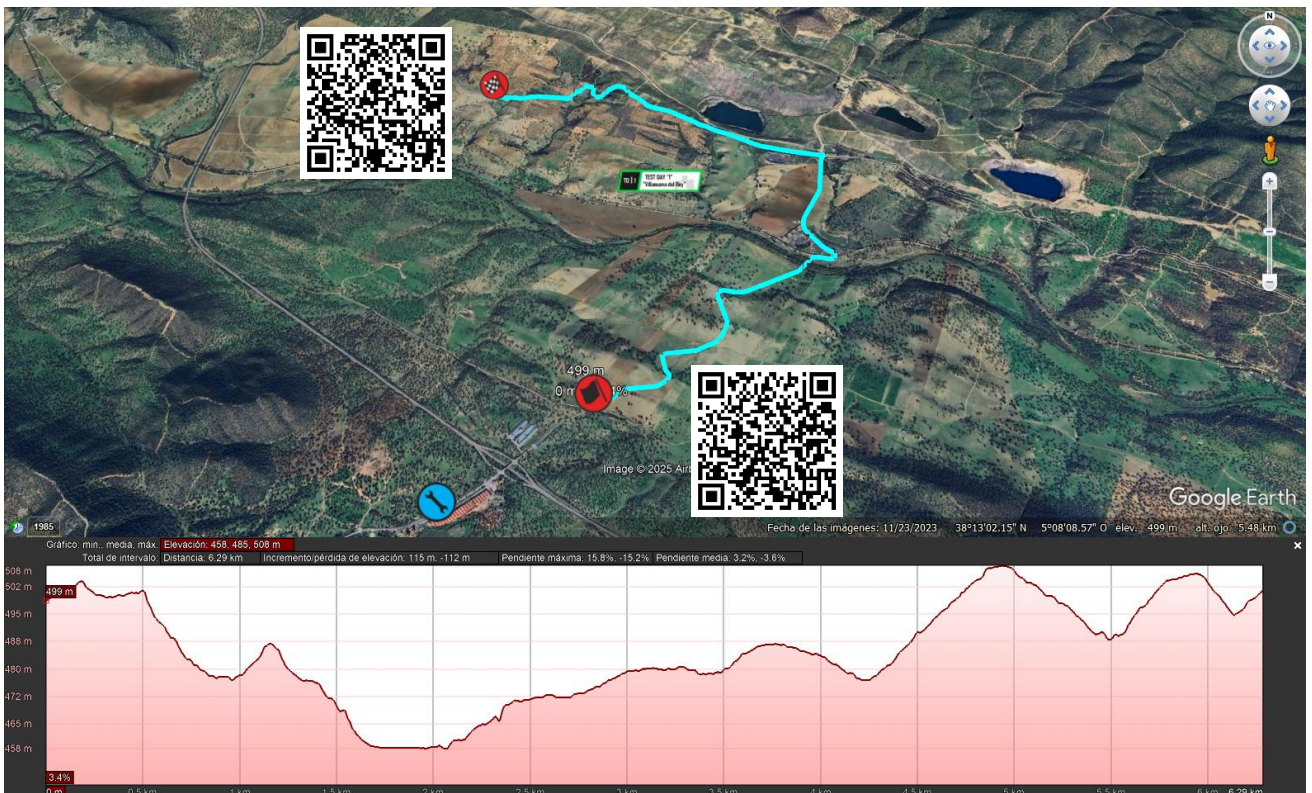


### 3. COLLECTION DOCUMENTS, SERVICE PARK AND SPECIAL STAGE MAP OF VILLANUEVA DEL REY



**Collection documents:** Hotel restaurante La Laguna N38°12'46.8" W5°08'29.0"

**Service Park:** Carretera CO-5401 N38°12'45.7" W5°08'31.4"



**Start:** Road CP-16 N38°13'01.8" W5°08'09.1"

**Finish:** Road N-432a N38°14'35.8" W5°08'43.3"

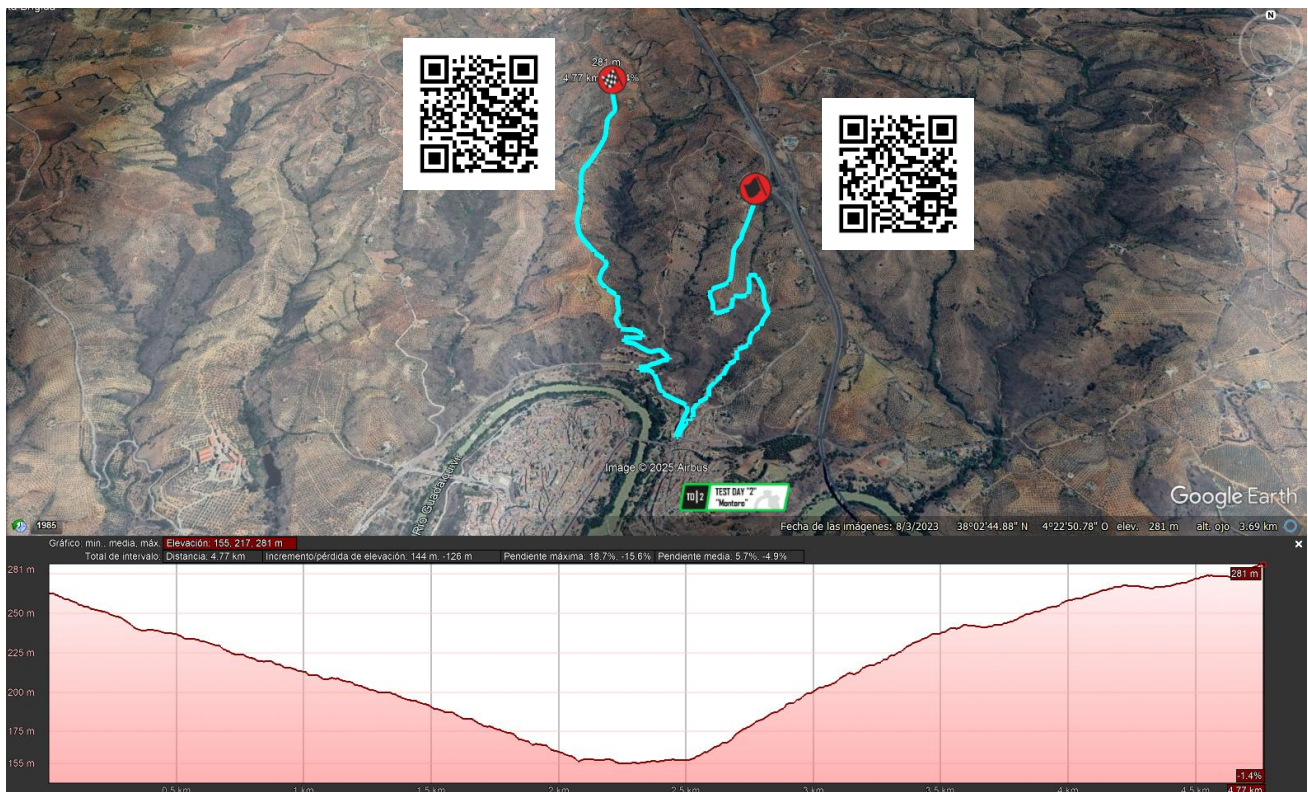


#### 4. COLLECTION DOCUMENTS, SERVICE PARK AND SPECIAL STAGE MAP OF MONTORO



**Collection documents:** Caseta Municipal N38°00'59.3" W4°22'55.2"

**Service Park:** Calle Plano de la Feria N38°00'59.2" W4°22'60.0"



**Start:** Road CO-5101 N38°02'18.4" W4°22'23.0"

**Finish:** Forest track N38°02'45.0" W4°22'50.8"